



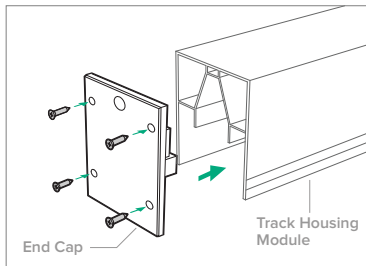
QUICK GUIDE



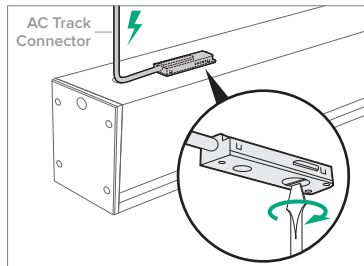
CAUTION:

1.  Ensure all power is turned off before attempting any of the steps shown below. Not doing so may result in a Darwin Award.
2.  When tightening screws use a lower power setting to avoid damage to surrounding parts.

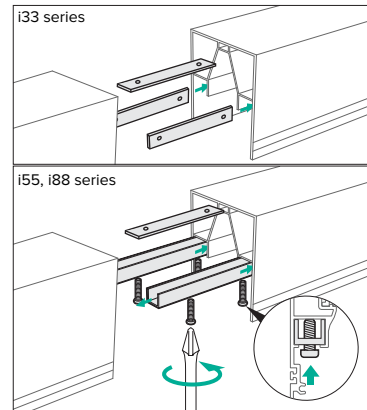
infinity 3.0 quick guide ▼



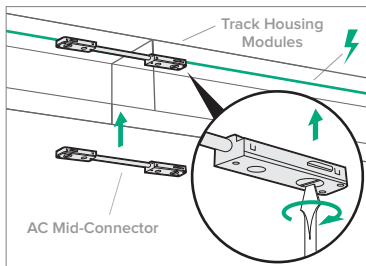
1. END CAP
Attach the end caps to the Track Housing with four screws.



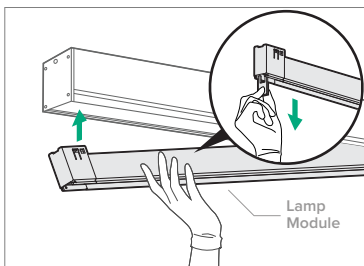
2. CONNECT AC POWER
Insert the AC Track Connector to the track housing and lock it into place using a flat head screwdriver.



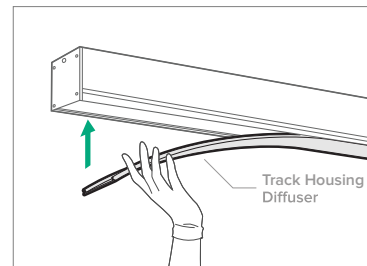
2. CONNECT TRACK HOUSING MODULES
Track Housing Modules are connected to one another via Track Housing Connectors. The connectors slide into the Track Housing and are secured with four phillips screws.



3. ATTACH AC MID-CONNECTORS
Our AC mid-connectors allow electric current to flow from one track housing to the next. Insert the AC mid-connectors where two track housing modules meet and lock the into place using a flat head screwdriver.



5. INSERT LAMP MODULES
Infinity Lamp Modules connect to the Track Housing using a secure and patented 'click-in' system. Simply push the Lamp Modules in until you hear a click. When removing the lamp module, pull it out as shown in the image above.



6. INSTALL LIGHT DIFFUSERS
The final step is to install the light diffusers. Push the diffusers into the Track Housing, then sit back and enjoy your light.