

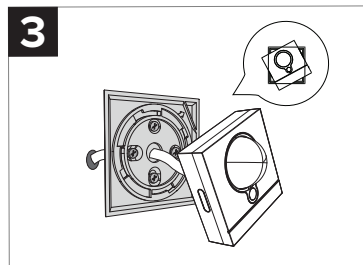
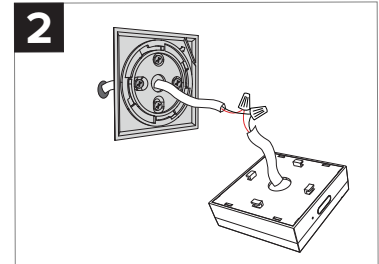
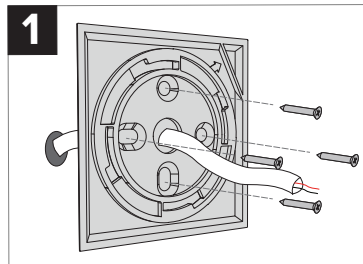
QUICK-GUIDE

PHASE C: INSTALL THE LYNC IoT SENSOR

Step 1: Attach the sensor's back case to the ceiling, ensuring access to a power supply. Run the power supply cable through the hole in the centre of the the back case.

Step 2: Connect the cable from the sensor, to the power supplying cable.

Step 3: Once all open wiring is safely sealed, line up the back of the sensor box, with the back case (attached to the wall) and secure by twisting it into place.



IMPORTANT FOR INSTALLATION:

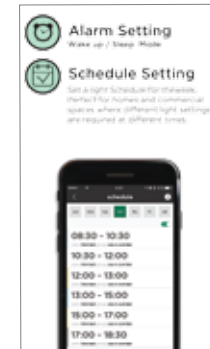
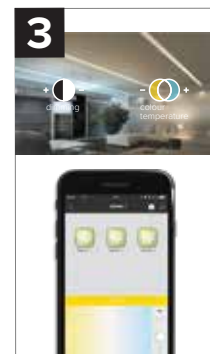
- ! Sensor should be installed 2.5m - 3m from the ground.
- ! One sensor must be installed per one group of LYNC lamp modules.
- ! Do not install in the path of direct light mirror-like surfaces, as this will cause inaccurate sensor readings.

PHASE D: APP SET-UP AND FEATURES

IMPORTANT: PLEASE FOLLOW THE IN-APP TUTORIAL WHEN SETTING-UP YOUR LYNC SYSTEM.

The Basics: The in-app tutorial will guide you through the basic system set-up, which includes **1 zones**, **2 groups** and **3 light settings**.

Features: Just a few of the great features you will find in the lynn app are **private/public building presets**, **colour temp.**, **dimming**, **alarms** and **lighting schedules**.



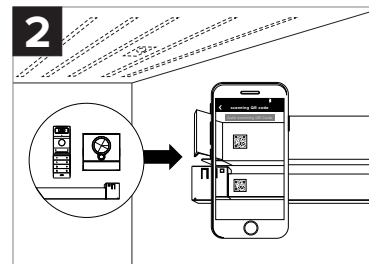
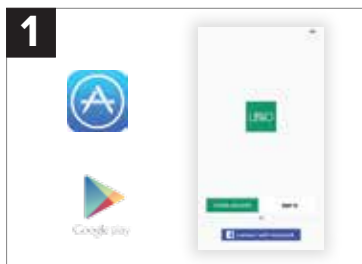
LINNO

LINK-THE-LYNC

PHASE A: APP AND LAMP MODULE REGISTRATION

Step 1: Download the Linno LYNC app via the app/play store and create an account or login in using your Facebook account.

Step 2: Register your lync products using the QR code via the Linno LYNC app.



PHASE B: BASIC INSTALLATION OF INFINITY 3.0

Step 1: Attach the End Caps to the track housing using the screws provided.

Step 2: Connect the AC power by inserting the connector into the track housing and locking it into place (90 degree turn) with a flat head screwdriver. **DO NOT** over turn.

Step 3: Connect Track Housing Modules.

Track Housing Modules are connected to one another via Track Housing Connectors. The connectors slide into the track housing and are secured with the screws provided.

Step 4: Attach AC Mid-Connectors.

Our AC mid-connectors allow electric current to flow from one track housing to the next. Insert the AC mid-connectors where two track housing modules meet and lock into place with a 90 degree turn using a flat head screwdriver. **DO NOT** over turn.

Step 5: Insert Lamp Modules.

Infinity 3.0 lamp modules connect to the Track Housing using a secure and patented 'click-in' system. Simply push the Lamp Modules in until you hear a click. When removing the lamp module, pull it out as shown in the image above. Make sure all electrical conduction points face the same direction.

Step 6: Install Diffusers. The final step is to push the diffuser into the track housing.

